

## **Reynolds Rd between Quadra St and Borden St**

**November 23, 2020 To November 27, 2020**



The data presented here is for information purposes only and should not be considered authoritative for construction, geotechnical, engineering, navigational, legal, or other site-specific uses. The information shared is owned by the Transportation Division of the Engineering Department at the District of Saanich. Accuracy is not guaranteed.

Start Date: 23-Nov-20  
 Start Time: 22:07  
 Station ID: C0058-02

**Location 1: Reynolds Rd between Quadra St and Borden St**

Note:

DATE:	November 23, 2020		November 24, 2020		November 25, 2020		November 26, 2020		November 27, 2020		WK AVG		WK AVG	HOURLY
	MON		TUE		WED		THURS		FRI		EB	WB	CH 1+2	%
Time:	EB	WB	EB	WB	EB	WB	EB	WB	EB	WB	EB	WB		
12-1 AM			3	5	8	11	8	13			6	10	16	0.2%
1-2 AM			2	3	3	8	6	6			4	6	9	0.1%
2-3 AM			2	8	1	5	1	6			1	6	8	0.1%
3-4 AM			2	6	6	4	4	4			4	5	9	0.1%
4-5 AM			0	4	2	6	3	12			2	7	9	0.1%
5-6 AM			12	18	7	28	9	21			9	22	32	0.4%
6-7 AM			30	90	31	96	34	88			32	91	123	1.7%
7-8 AM			119	264	147	254	118	267			128	262	390	5.3%
8-9 AM			193	442	199	468	202	431			198	447	645	8.8%
9-10 AM			143	329	144	299	151	315			146	314	460	6.3%
10-11 AM			156	348	144	312	169	346			156	335	492	6.7%
11-12 PM			202	332	171	360	188	365			187	352	539	7.3%
12-1 PM			192	444	167	362	169	378			176	395	571	7.8%
1-2 PM			176	393	180	381	173	412			176	395	572	7.8%
2-3 PM			218	447	206	426	207	452			210	442	652	8.9%
3-4 PM			211	553	223	523	257	530			230	535	766	10.4%
4-5 PM			213	450	206	447	229	447			216	448	664	9.0%
5-6 PM			178	339	182	366	183	336			181	347	528	7.2%
6-7 PM			91	195	99	218	116	231			102	215	317	4.3%
7-8 PM			70	133	62	124	82	134			71	130	202	2.7%
8-9 PM			47	88	54	86	47	115			49	96	146	2.0%
9-10 PM			34	64	38	67	41	66			38	66	103	1.4%
10-11 PM	18	23	21	41	19	36	23	42			20	36	56	0.8%
11-12 AM	11	18	14	14	21	23	7	21			13	19	32	0.4%
<b>LANES</b>			<b>2329</b>	<b>5010</b>	<b>2320</b>	<b>4910</b>	<b>2427</b>	<b>5038</b>			<b>2357</b>	<b>4982</b>	<b>7339</b>	<b>100.0%</b>
<b>TOTAL</b>			<b>7339</b>		<b>7230</b>		<b>7465</b>				<b>7340</b>			
	MON		TUE		WED		THURS		FRI		WK AVG			

PEAK HOUR					TOTAL VEHICALS-PEAK PERIODS		2 HOUR PEAK INTERVALS						
MAX. 7 - 9 am PEAK HOUR	645	⇒	8.8%	between 8-9 AM	3337	⇒	6 HR TOTAL	<b>2 HR AM (7 - 9 AM)</b>					
MAX. 7 - 11 am PEAK HOUR	645	⇒	8.8%	between 8-9 AM	2227	⇒	4 HR TOTAL	VEH / HR	VEH / 2HR	2 HR %			
								7-8 AM	390	1035	14.1%		
								8-9 AM	645				
MAX. 11 am - 1 pm PEAK HOUR	571	⇒	7.8%	between 12-1 PM			<b>24 HOUR FACTORS</b>	<b>2 HR NOON (11 - 1 PM)</b>					
MAX. 11 am - 3 pm PEAK HOUR	652	⇒	8.9%	between 2-3 PM				VEH / HR	VEH / 2HR	2 HR %			
MAX. 4 - 6 pm PEAK HOUR	664	⇒	9.0%	between 4-5 PM			2.20	⇒	6-24 HR FACT.				
MAX. 3 - 6 pm PEAK HOUR	766	⇒	10.4%	between 3-4 PM			3.30	⇒	4-24 HR FACT.	<b>2 HR PM (4 - 6 PM)</b>			
								VEH / HR	VEH / 2HR	2 HR %			
								4-5 PM	664	1192	16.2%		
								5-6 PM	528				

# Reynolds Rd between Quadra St and Borden St

Westbound

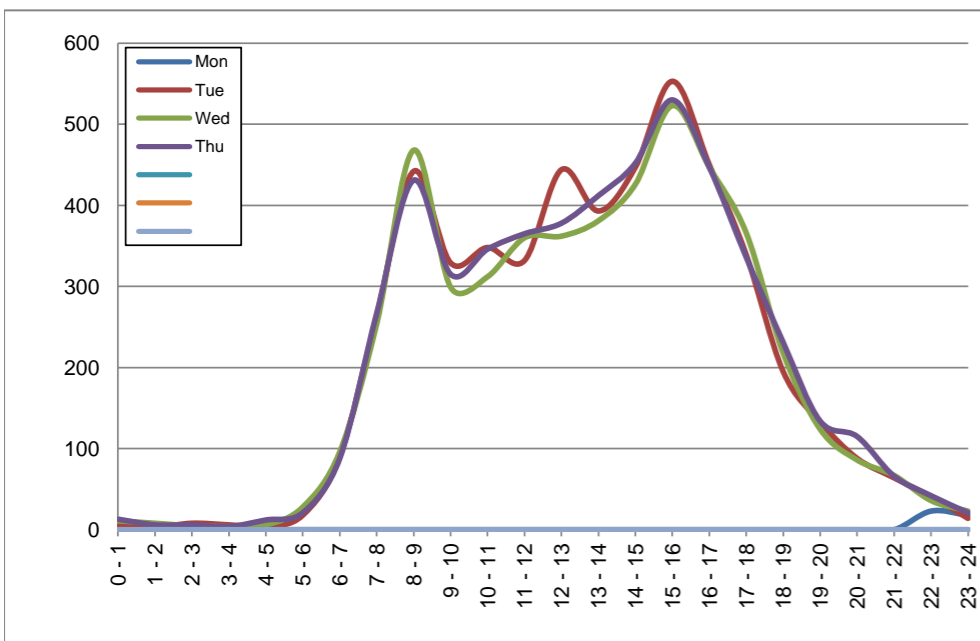
November 23, 2020 to November 26, 2020

## Hourly Volumes

Time Period	Mon Nov 23	Tue Nov 24	Wed Nov 25	Thu Nov 26
0 - 1		5	11	13
1 - 2		3	8	6
2 - 3		8	5	6
3 - 4		6	4	4
4 - 5		4	6	12
5 - 6		18	28	21
6 - 7		90	96	88
7 - 8		264	254	267
8 - 9		442	468	431
9 - 10		329	299	315
10 - 11		348	312	346
11 - 12		332	360	365
12 - 13		444	362	378
13 - 14		393	381	412
14 - 15		447	426	452
15 - 16		553	523	530
16 - 17		450	447	447
17 - 18		339	366	336
18 - 19		195	218	231
19 - 20		133	124	134
20 - 21		88	86	115
21 - 22		64	67	66
22 - 23	23	41	36	42
23 - 24	18	14	23	21
<b>Day Total</b>		<b>5010</b>	<b>4910</b>	<b>5038</b>

## 15-Minute Volumes

Time Start	Mon Nov 23	Tue Nov 24	Wed Nov 25	Thu Nov 26	
0:00		2	4	2	
0:15		3	3	4	
0:30		0	2	4	
0:45		0	2	3	
1:00		1	2	2	
1:15		1	4	0	
1:30		1	2	2	
1:45		0	0	2	
2:00		1	0	2	
2:15		1	1	1	
2:30		2	3	2	
2:45		4	1	1	
3:00		2	1	0	
3:15		0	0	1	
3:30		2	1	1	
3:45		2	2	2	
4:00		0	1	4	
4:15		1	1	2	
4:30		1	0	1	
4:45		2	4	5	
5:00		4	2	1	
5:15		4	8	4	
5:30		4	8	9	
5:45		6	10	7	
6:00		8	11	8	
6:15		15	21	18	
6:30		27	27	31	
6:45		40	37	31	
7:00		42	36	52	
7:15		62	48	52	
7:30		81	79	88	
7:45		79	91	75	
8:00		91	100	72	
8:15		105	113	115	
8:30		126	109	123	
8:45		120	146	121	
9:00		95	83	95	
9:15		75	73	78	
9:30		87	69	65	
9:45		72	74	77	
10:00		83	72	82	
10:15		98	89	82	
10:30		81	67	80	
10:45		86	84	102	
11:00		67	83	62	
11:15		81	74	98	
11:30		90	100	104	
11:45		94	103	101	
12:00			122	96	87
12:15			100	88	103
12:30			112	87	97
12:45			110	91	91
13:00			105	79	98
13:15			80	102	103
13:30			102	93	114
13:45			106	107	97
14:00			92	103	91
14:15			106	88	97
14:30			101	100	120
14:45			148	135	144
15:00			149	127	116
15:15			139	117	139
15:30			142	152	147
15:45			123	127	128
16:00			120	124	111
16:15			117	108	112
16:30			109	119	121
16:45			104	96	103
17:00			91	105	114
17:15			97	103	81
17:30			82	75	91
17:45			69	83	50
18:00			64	58	59
18:15			57	56	55
18:30			36	49	65
18:45			38	55	52
19:00			40	27	46
19:15			37	27	33
19:30			23	39	32
19:45			33	31	23
20:00			34	34	40
20:15			16	21	32
20:30			25	16	29
20:45			13	15	14
21:00			15	23	25
21:15			28	20	14
21:30			16	16	14
21:45			5	8	13
22:00	5	10	9	12	
22:15	6	10	7	11	
22:30	5	10	9	13	
22:45	7	11	11	6	
23:00	6	5	5	11	
23:15	8	4	7	5	
23:30	2	2	5	4	
23:45	2	3	6	1	



Site notes:

# Reynolds Rd between Quadra St and Borden St

Eastbound

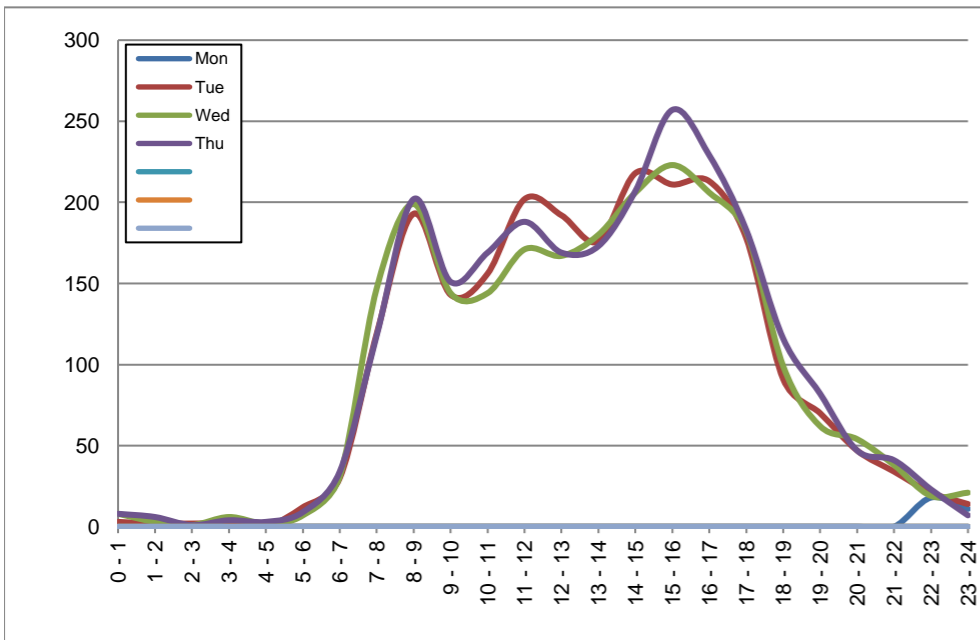
November 23, 2020 to November 26, 2020

## Hourly Volumes

Time Period	Mon	Tue	Wed	Thu			
	Nov 23	Nov 24	Nov 25	Nov 26			
0 - 1		3	8	8			
1 - 2		2	3	6			
2 - 3		2	1	1			
3 - 4		2	6	4			
4 - 5		0	2	3			
5 - 6		12	7	9			
6 - 7		30	31	34			
7 - 8		119	147	118			
8 - 9		193	199	202			
9 - 10		143	144	151			
10 - 11		156	144	169			
11 - 12		202	171	188			
12 - 13		192	167	169			
13 - 14		176	180	173			
14 - 15		218	206	207			
15 - 16		211	223	257			
16 - 17		213	206	229			
17 - 18		178	182	183			
18 - 19		91	99	116			
19 - 20		70	62	82			
20 - 21		47	54	47			
21 - 22		34	38	41			
22 - 23	18	21	19	23			
23 - 24	11	14	21	7			
<b>Day Total</b>		<b>2329</b>	<b>2320</b>	<b>2427</b>			

## 15-Minute Volumes

Time Start	Mon	Tue	Wed	Thu			
	Nov 23	Nov 24	Nov 25	Nov 26			
0:00		3	2	3			
0:15		0	5	1			
0:30		0	0	3			
0:45		0	1	1			
1:00		0	1	2			
1:15		1	2	2			
1:30		0	0	1			
1:45		1	0	1			
2:00		0	1	0			
2:15		1	0	0			
2:30		1	0	1			
2:45		0	0	0			
3:00		2	3	0			
3:15		0	1	2			
3:30		0	0	1			
3:45		0	2	1			
4:00		0	0	1			
4:15		0	0	2			
4:30		0	2	0			
4:45		0	0	0			
5:00		5	1	0			
5:15		2	2	2			
5:30		2	2	4			
5:45		3	2	3			
6:00		3	5	7			
6:15		7	3	9			
6:30		10	9	9			
6:45		10	14	9			
7:00		23	22	18			
7:15		23	41	29			
7:30		27	29	32			
7:45		46	55	39			
8:00		25	33	27			
8:15		45	45	54			
8:30		54	56	64			
8:45		69	65	57			
9:00		38	47	52			
9:15		39	31	29			
9:30		31	28	30			
9:45		35	38	40			
10:00		45	40	35			
10:15		38	33	51			
10:30		37	32	45			
10:45		36	39	38			
11:00		60	34	42			
11:15		52	45	49			
11:30		56	47	43			
11:45		34	45	54			
12:00			61	48	51		
12:15			41	37	45		
12:30			55	39	38		
12:45			35	43	35		
13:00			45	46	42		
13:15			41	46	45		
13:30			39	42	39		
13:45			51	46	47		
14:00			56	41	44		
14:15			41	56	53		
14:30			65	54	45		
14:45			56	55	65		
15:00			55	50	68		
15:15			60	65	56		
15:30			39	49	62		
15:45			57	59	71		
16:00			47	55	55		
16:15			68	62	55		
16:30			52	42	56		
16:45			46	47	63		
17:00			56	54	59		
17:15			46	61	44		
17:30			39	31	39		
17:45			37	36	41		
18:00			28	30	31		
18:15			23	28	26		
18:30			20	21	32		
18:45			20	20	27		
19:00			21	21	29		
19:15			21	13	18		
19:30			14	10	17		
19:45			14	18	18		
20:00			13	16	16		
20:15			16	12	12		
20:30			8	13	10		
20:45			10	13	9		
21:00			10	11	13		
21:15			11	9	8		
21:30			8	13	14		
21:45			5	5	6		
22:00	4	7	2	5			
22:15	5	4	9	2			
22:30	4	6	4	5			
22:45	5	4	4	11			
23:00	4	7	8	4			
23:15	4	3	7	3			
23:30	2	2	3	0			
23:45	1	2	3	0			



Site notes:

# Vehicle Speed Summary

Saanich Engineering Department

Count Id: [C0058-02](#)

Filename: [Reynolds Rd between Quadra St and Borden St-Nov-2020.xlsm](#)

**Location:** Reynolds Rd between Quadra St and Borden St

Note:

Direction: **East-West**

Dates: **November 23, 2020 To November 27, 2020**

*Filtered data*

AVG. SPEED	<b>23</b> mph	<b>36</b> km/h
50 % SPEED	<b>22</b> mph	<b>36</b> km/h
85 % SPEED	<b>28</b> mph	<b>45</b> km/h
95 % SPEED	<b>31</b> mph	<b>50</b> km/h

Location Map



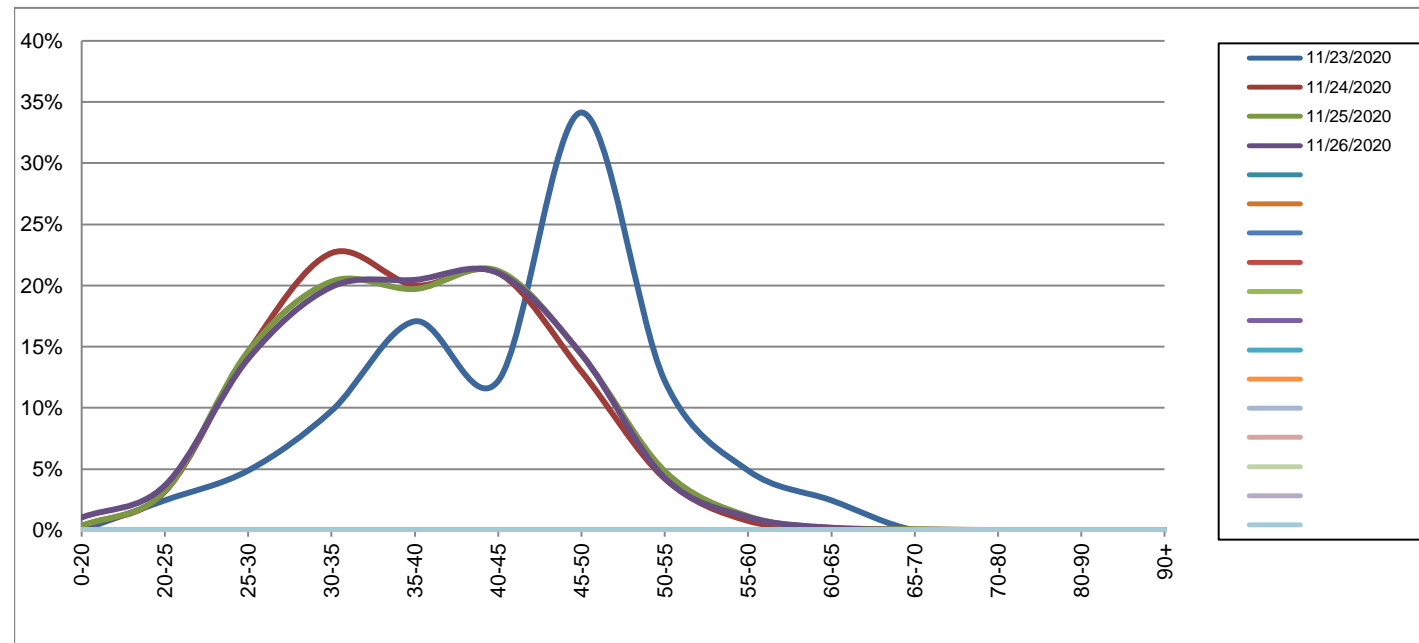
**Reynolds Rd between Quadra St and Borden St**

Westbound  
November 23, 2020 to November 26, 2020

Daily Speed Bin Percentages															Daily Speed Bin Volumes														Total	Avg.
Bin #	1	2	3	4	5	6	7	8	9	10	11	12	13	14	1	2	3	4	5	6	7	8	9	10	11	12	13	14	Volume	Speed
Bin Speeds	0-20	20-25	25-30	30-35	35-40	40-45	45-50	50-55	55-60	60-65	65-70	70-80	80-90	90+	0-20	20-25	25-30	30-35	35-40	40-45	45-50	50-55	55-60	60-65	65-70	70-80	80-90	90+		
11/23/2020	0.0%	2.4%	4.9%	9.8%	17.1%	12.2%	34.1%	12.2%	4.9%	2.4%	0.0%	0.0%	0.0%	0.0%	0	1	2	4	7	5	14	5	2	1	0	0	0	0	41	44
11/24/2020	0.3%	3.2%	14.6%	22.7%	20.0%	21.0%	13.0%	4.2%	0.8%	0.2%	0.1%	0.0%	0.0%	0.0%	16	158	731	1135	1003	1054	650	211	38	10	3	1	0	0	5010	38
11/25/2020	0.3%	3.2%	14.6%	20.3%	19.7%	21.2%	14.4%	4.8%	1.1%	0.2%	0.1%	0.0%	0.0%	0.0%	17	157	718	998	968	1041	705	237	56	8	4	0	0	1	4910	38
11/26/2020	1.0%	3.7%	14.0%	19.9%	20.5%	21.0%	14.4%	4.3%	1.1%	0.2%	0.0%	0.0%	0.0%	0.0%	52	184	706	1002	1031	1059	725	215	54	10	0	0	0	0	5038	38
<b>Total</b>	0.6%	3.3%	14.4%	20.9%	20.1%	21.1%	14.0%	4.5%	1.0%	0.2%	0.0%	0.0%	0.0%	0.0%	85	500	2157	3139	3009	3159	2094	668	150	29	7	1	0	1	14999	38

**Speed Data Summary**

Bin #	1	2	3	4	5	6	7	8	9	10	11	12	13	14	Total
Bin Speeds	0-20	20-25	25-30	30-35	35-40	40-45	45-50	50-55	55-60	60-65	65-70	70-80	80-90	90+	
Survey Total	85	500	2157	3139	3009	3159	2094	668	150	29	7	1	0	1	14999
% Total	0.6%	3.3%	14.4%	20.9%	20.1%	21.1%	14.0%	4.5%	1.0%	0.2%	0.0%	0.0%	0.0%	0.0%	100%
Accumulated %	0.6%	3.9%	18.3%	39.2%	59.3%	80.3%	94.3%	98.7%	99.7%	99.9%	100.0%	100.0%	100.0%	100%	
Inverse Accum. %	99.4%	96.1%	81.7%	60.8%	40.7%	19.7%	5.7%	1.3%	0.3%	0.1%	0.0%	0.0%	0.0%	0.0%	
Average Speed	38 KM/H														



Site notes:

**Reynolds Rd between Quadra St and Borden St**

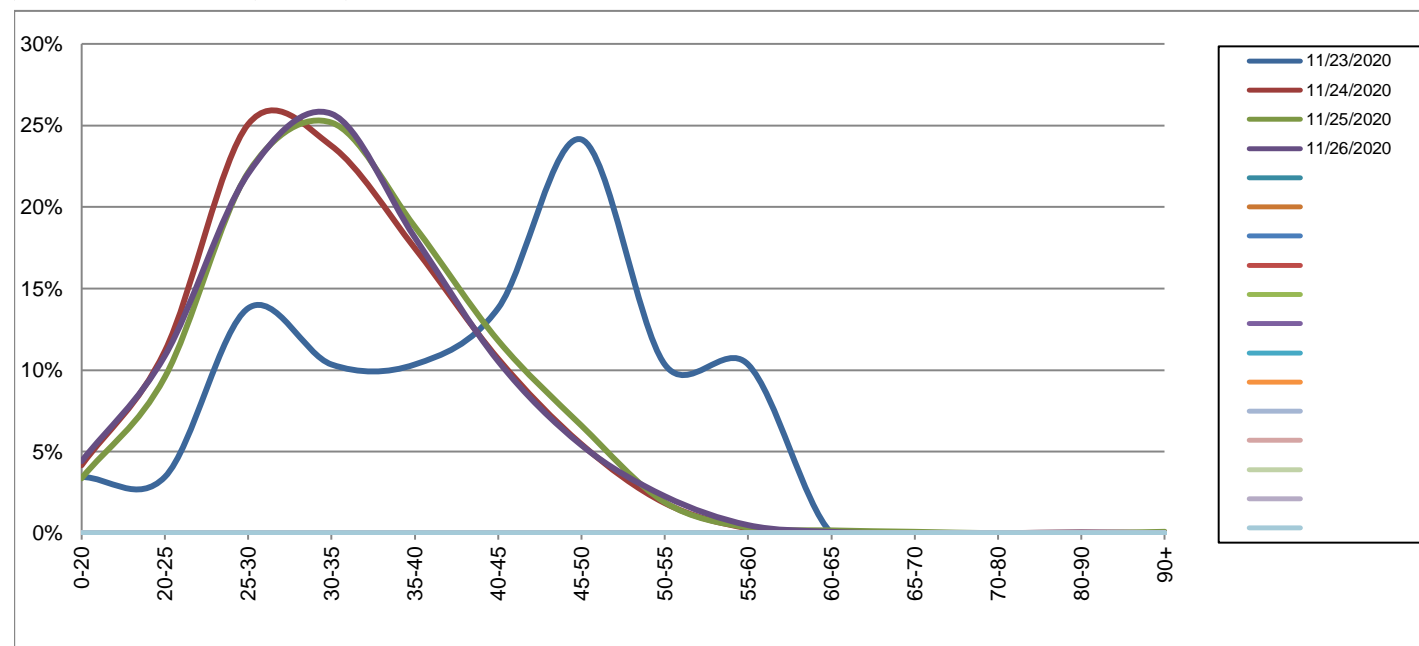
Eastbound

November 23, 2020 to November 26, 2020

Daily Speed Bin Percentages															Daily Speed Bin Volumes														Total	Avg.
Bin #	1	2	3	4	5	6	7	8	9	10	11	12	13	14	1	2	3	4	5	6	7	8	9	10	11	12	13	14	Volume	Speed
Bin Speeds	0-20	20-25	25-30	30-35	35-40	40-45	45-50	50-55	55-60	60-65	65-70	70-80	80-90	90+	0-20	20-25	25-30	30-35	35-40	40-45	45-50	50-55	55-60	60-65	65-70	70-80	80-90	90+		
11/23/2020	3.4%	3.4%	13.8%	10.3%	10.3%	13.8%	24.1%	10.3%	10.3%	0.0%	0.0%	0.0%	0.0%	0.0%	1	1	4	3	3	4	7	3	3	0	0	0	0	0	29	41
11/24/2020	4.2%	11.2%	25.1%	23.7%	17.5%	10.7%	5.5%	1.8%	0.3%	0.0%	0.0%	0.0%	0.0%	0.0%	97	260	584	553	407	249	127	43	7	1	0	0	1	0	2329	32
11/25/2020	3.4%	9.6%	22.1%	25.2%	18.8%	11.8%	6.6%	1.9%	0.3%	0.2%	0.1%	0.0%	0.0%	0.1%	78	222	513	584	436	274	153	44	8	4	2	0	0	2	2320	33
11/26/2020	4.4%	10.9%	22.0%	25.7%	18.1%	10.5%	5.4%	2.3%	0.5%	0.1%	0.0%	0.0%	0.0%	0.0%	107	264	535	624	440	256	131	55	12	2	0	0	1	0	2427	33
<b>Total</b>	4.0%	10.5%	23.0%	24.8%	18.1%	11.0%	5.9%	2.0%	0.4%	0.1%	0.0%	0.0%	0.0%	0.0%	283	747	1636	1764	1286	783	418	145	30	7	2	0	2	2	7105	33

**Speed Data Summary**

Bin #	1	2	3	4	5	6	7	8	9	10	11	12	13	14	Total
Bin Speeds	0-20	20-25	25-30	30-35	35-40	40-45	45-50	50-55	55-60	60-65	65-70	70-80	80-90	90+	
Survey Total	283	747	1636	1764	1286	783	418	145	30	7	2	0	2	2	7105
% Total	4.0%	10.5%	23.0%	24.8%	18.1%	11.0%	5.9%	2.0%	0.4%	0.1%	0.0%	0.0%	0.0%	0.0%	100%
Accumulated %	4.0%	14.5%	37.5%	62.4%	80.5%	91.5%	97.4%	99.4%	99.8%	99.9%	99.9%	99.9%	100.0%	100%	
Inverse Accum. %	96.0%	85.5%	62.5%	37.6%	19.5%	8.5%	2.6%	0.6%	0.2%	0.1%	0.1%	0.1%	0.0%	0.0%	
Average Speed	33 KM/H														



Site notes:

**Reynolds Rd between Quadra St and Borden St**

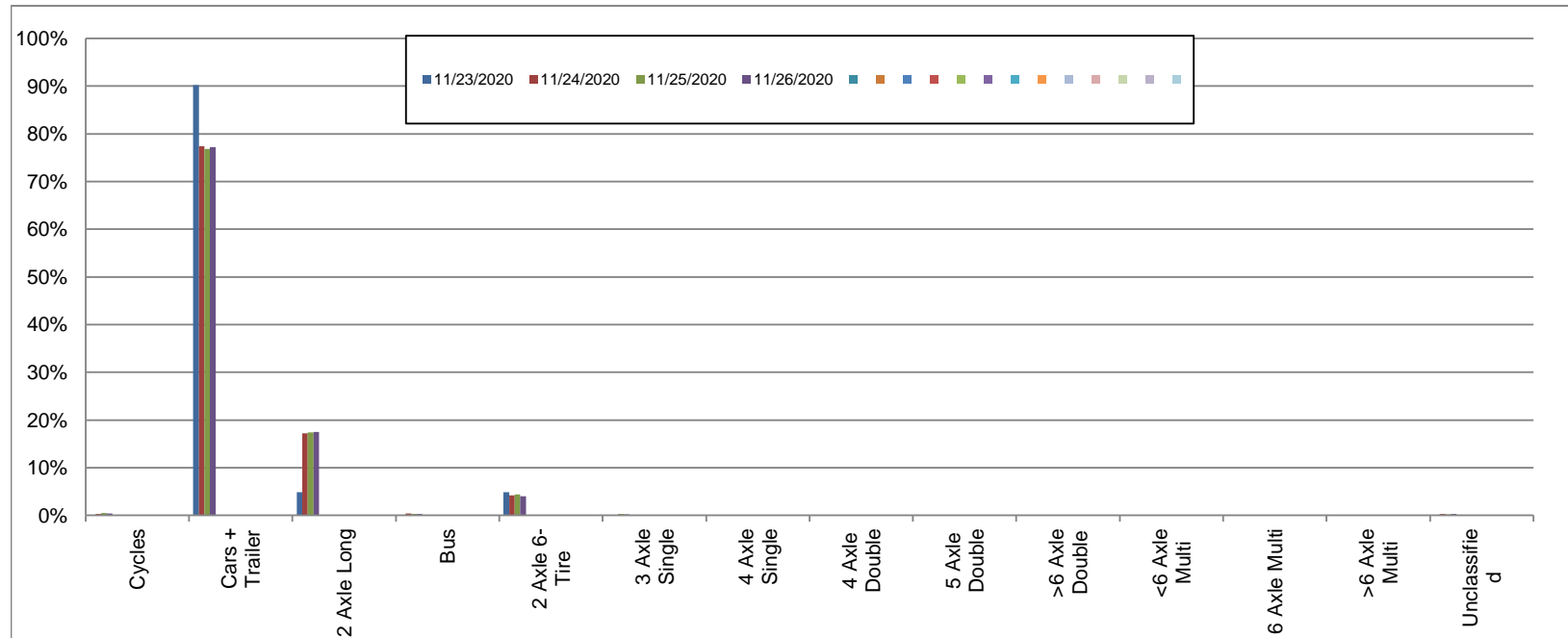
Westbound

November 23, 2020 to November 26, 2020

Daily Class Bin Percentages															Daily Class Bin Volumes														
Bin #	1	2	3	4	5	6	7	8	9	10	11	12	13	14	1	2	3	4	5	6	7	8	9	10	11	12	13	14	Total Volume
Bin Class	Cycles	Cars + Trailer	2 Axle Long	Bus	2 Axle 6-Tire	3 Axle Single	4 Axle Single	4 Axle Double	5 Axle Double	>6 Axle Double	<6 Axle Multi	6 Axle Multi	>6 Axle Multi	Unclassified	Cycles	Cars + Trailer	2 Axle Long	Bus	2 Axle 6-Tire	3 Axle Single	4 Axle Single	4 Axle Double	5 Axle Double	>6 Axle Double	<6 Axle Multi	6 Axle Multi	>6 Axle Multi	Unclassified	
11/23/2020	0.0%	90.2%	4.9%	0.0%	4.9%	0.0%	0.0%	0.0%	0.0%	0.0%	0.0%	0.0%	0.0%	0.0%	0	37	2	0	2	0	0	0	0	0	0	0	0	0	41
11/24/2020	0.3%	77.4%	17.2%	0.4%	4.2%	0.1%	0.0%	0.1%	0.0%	0.0%	0.0%	0.0%	0.0%	0.3%	14	3877	861	21	208	7	0	6	2	0	0	0	0	14	5010
11/25/2020	0.4%	76.8%	17.4%	0.3%	4.4%	0.3%	0.0%	0.1%	0.0%	0.0%	0.0%	0.0%	0.0%	0.2%	22	3771	854	16	216	13	0	6	0	0	0	0	0	12	4910
11/26/2020	0.4%	77.2%	17.5%	0.3%	4.0%	0.2%	0.0%	0.1%	0.0%	0.0%	0.0%	0.0%	0.0%	0.3%	18	3891	882	16	202	10	0	5	1	0	0	0	0	13	5038
<b>Total</b>	0.4%	77.2%	17.3%	0.4%	4.2%	0.2%	0.0%	0.1%	0.0%	0.0%	0.0%	0.0%	0.0%	0.3%	54	11576	2599	53	628	30	0	17	3	0	0	0	0	39	14999

**Class Data Summary**

Bin #	1	2	3	4	5	6	7	8	9	10	11	12	13	14	Total Volume
Bin Class	Cycles	Cars + Trailer	2 Axle Long	Bus	2 Axle 6-Tire	3 Axle Single	4 Axle Single	4 Axle Double	5 Axle Double	>6 Axle Double	<6 Axle Multi	6 Axle Multi	>6 Axle Multi	Unclassified	Total Volume
<b>Survey Total</b>	54	11576	2599	53	628	30	0	17	3	0	0	0	0	39	14999
<b>% Total</b>	0.4%	77.2%	17.3%	0.4%	4.2%	0.2%	0.0%	0.1%	0.0%	0.0%	0.0%	0.0%	0.0%	0.3%	100%
<b>Accumulated %</b>	0.4%	77.5%	94.9%	95.2%	99.4%	99.6%	99.6%	99.7%	99.7%	99.7%	99.7%	99.7%	99.7%	100.0%	
<b>Inv. Accum. %</b>	99.6%	22.5%	5.1%	4.8%	0.6%	0.4%	0.4%	0.3%	0.3%	0.3%	0.3%	0.3%	0.3%	0.0%	



**Classification Descriptions**

Bin #	Bin Description
1	Motorcycles
2	Passenger cars, including those with recreational trailers
3	2-axle pick-ups, vans, and RVs, including those with recreational trailers
4	Buses
5	2-axle, 6-tire single units
6	3-axle single units
7	4-axle single units
8	3-axle or 4-axle double unit
9	5-axle double unit
10	6-, 7-, or 8-axle double unit
11	5-axle multiple unit
12	6-axle multiple unit
13	7-or-more-axle multiple unit
14	Vehicles that could not be classified

Site notes:



**Reynolds Rd between Quadra St and Borden St**

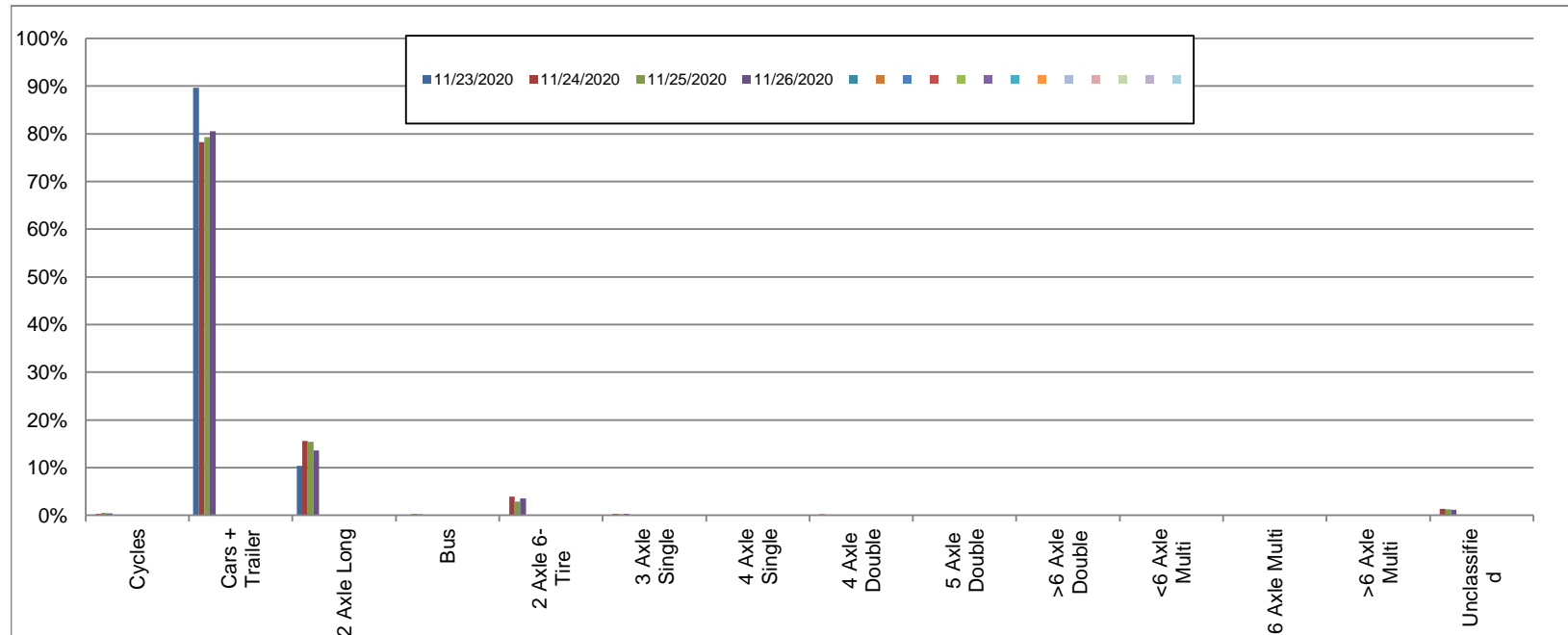
Eastbound

November 23, 2020 to November 26, 2020

Daily Class Bin Percentages															Daily Class Bin Volumes														
Bin #	1	2	3	4	5	6	7	8	9	10	11	12	13	14	1	2	3	4	5	6	7	8	9	10	11	12	13	14	Total Volume
Bin Class	Cycles	Cars + Trailer	2 Axle Long	Bus	2 Axle 6-Tire	3 Axle Single	4 Axle Single	4 Axle Double	5 Axle Double	>6 Axle Double	<6 Axle Multi	6 Axle Multi	>6 Axle Multi	Unclassified	Cycles	Cars + Trailer	2 Axle Long	Bus	2 Axle 6-Tire	3 Axle Single	4 Axle Single	4 Axle Double	5 Axle Double	>6 Axle Double	<6 Axle Multi	6 Axle Multi	>6 Axle Multi	Unclassified	
11/23/2020	0.0%	89.7%	10.3%	0.0%	0.0%	0.0%	0.0%	0.0%	0.0%	0.0%	0.0%	0.0%	0.0%	0.0%	0	26	3	0	0	0	0	0	0	0	0	0	0	0	29
11/24/2020	0.3%	78.2%	15.5%	0.0%	4.0%	0.3%	0.0%	0.2%	0.0%	0.0%	0.0%	0.0%	0.0%	1.4%	8	1822	362	0	92	7	1	5	0	0	0	0	0	32	2329
11/25/2020	0.5%	79.3%	15.4%	0.3%	2.9%	0.2%	0.0%	0.1%	0.0%	0.0%	0.0%	0.0%	0.0%	1.3%	12	1840	357	6	67	5	1	3	0	0	0	0	0	29	2320
11/26/2020	0.4%	80.6%	13.6%	0.2%	3.5%	0.3%	0.1%	0.1%	0.0%	0.0%	0.0%	0.0%	0.0%	1.2%	10	1955	331	4	86	8	2	2	0	0	0	0	0	29	2427
<b>Total</b>	<b>0.4%</b>	<b>79.4%</b>	<b>14.8%</b>	<b>0.1%</b>	<b>3.4%</b>	<b>0.3%</b>	<b>0.1%</b>	<b>0.1%</b>	<b>0.0%</b>	<b>0.0%</b>	<b>0.0%</b>	<b>0.0%</b>	<b>0.0%</b>	<b>1.3%</b>	<b>30</b>	<b>5643</b>	<b>1053</b>	<b>10</b>	<b>245</b>	<b>20</b>	<b>4</b>	<b>10</b>	<b>0</b>	<b>0</b>	<b>0</b>	<b>0</b>	<b>0</b>	<b>90</b>	<b>7105</b>

**Class Data Summary**

Bin #	1	2	3	4	5	6	7	8	9	10	11	12	13	14	Total Volume
Bin Class	Cycles	Cars + Trailer	2 Axle Long	Bus	2 Axle 6-Tire	3 Axle Single	4 Axle Single	4 Axle Double	5 Axle Double	>6 Axle Double	<6 Axle Multi	6 Axle Multi	>6 Axle Multi	Unclassified	Total Volume
<b>Survey Total</b>	30	5643	1053	10	245	20	4	10	0	0	0	0	0	90	7105
<b>% Total</b>	0.4%	79.4%	14.8%	0.1%	3.4%	0.3%	0.1%	0.1%	0.0%	0.0%	0.0%	0.0%	0.0%	1.3%	100%
<b>Accumulated %</b>	0.4%	79.8%	94.7%	94.8%	98.3%	98.5%	98.6%	98.7%	98.7%	98.7%	98.7%	98.7%	98.7%	100.0%	
<b>Inv. Accum. %</b>	99.6%	20.2%	5.3%	5.2%	1.7%	1.5%	1.4%	1.3%	1.3%	1.3%	1.3%	1.3%	1.3%	0.0%	



**Classification Descriptions**

Bin #	Bin Description
1	Motorcycles
2	Passenger cars, including those with recreational trailers
3	2-axle pick-ups, vans, and RVs, including those with recreational trailers
4	Buses
5	2-axle, 6-tire single units
6	3-axle single units
7	4-axle single units
8	3-axle or 4-axle double unit
9	5-axle double unit
10	6-, 7-, or 8-axle double unit
11	5-axle multiple unit
12	6-axle multiple unit
13	7-or-more-axle multiple unit
14	Vehicles that could not be classified

Site notes: